



ESP8266 AT Instruction Set

Version 1.3

Espressif Systems IOT Team

Copyright (c) 2015



Disclaimer and Copyright Notice

Information in this document, including URL references, is subject to change without notice.

THIS DOCUMENT IS PROVIDED AS IS WITH NO WARRANTIES WHATSOEVER, INCLUDING ANY WARRANTY OF MERCHANTABILITY, NON-INFRINGEMENT, FITNESS FOR ANY PARTICULAR PURPOSE, OR ANY WARRANTY OTHERWISE ARISING OUT OF ANY PROPOSAL, SPECIFICATION OR SAMPLE. All liability, including liability for infringement of any proprietary rights, relating to use of information in this document is disclaimed. No licenses express or implied, by estoppel or otherwise, to any intellectual property rights are granted herein.

The WiFi Alliance Member Logo is a trademark of the WiFi Alliance.

All trade names, trademarks and registered trademarks mentioned in this document are property of their respective owners, and are hereby acknowledged.

Copyright © 2015 Espressif Systems Inc. All rights reserved.



Table of Contents

- 1. Preambles6**
 - 1.1. User-define AT commands6
 - 1.2. Download AT firmware into Flash7
- 2. Command Description8**
- 3. Basic AT Command Set9**
 - 3.1. Overview9
 - 3.2. Commands10
 - 1. AT – Test AT startup10
 - 2. AT+RST – Restart module10
 - 3. AT+GMR – View version info10
 - 4. AT+GSLP – Enter deep-sleep mode11
 - 5. ATE – AT commands echo11
 - 6. AT+RESTORE – Factory reset11
 - 7. AT+UART – UART configuration12
 - 8. AT+UART_CUR – current UART configuration13
 - 9. AT+UART_DEF – default UART configuration14
 - 10. AT+SLEEP – sleep mode15
 - 11. AT+RFPOWER – set maximum value of RF TX Power15
 - 12. AT+RFVDD – set RF TX Power according to VDD3316
- 4. WiFi Functions Overview17**
 - 4.1. Commands19
 - 1. AT+CWMODE – WiFi mode19
 - 2. AT+CWMODE_CUR – current WiFi mode20
 - 3. AT+CWMODE_DEF – default WiFi mode21
 - 4. AT+CWJAP – Connect to AP22
 - 5. AT+CWJAP_CUR – Connect to AP, for current23
 - 6. AT+CWJAP_DEF – Connect to AP, save as default24
 - 7. AT+CWLAP – List available APs25
 - 8. AT+CWQAP – Disconnect from AP26



- 9. AT+CWSAP – Configuration of softAP mode27
- 10. AT+CWSAP_CUR – Current config of softAP mode28
- 11. AT+CWSAP_DEF – Default config of softAP mode.....29
- 12. AT+CWLIF – IP of stations29
- 13. AT+CWDHCP – Enable/Disable DHCP30
- 14. AT+CWDHCP_CUR – Enable/Disable DHCP31
- 15. AT+CWDHCP_DEF – Enable/Disable DHCP and save to Flash32
- 16. AT+CWAUTOCONN – Auto connect to AP or not.....33
- 17. AT+CIPSTAMAC – Set MAC address of station33
- 18. AT+CIPSTAMAC_CUR – Set MAC address of station34
- 19. AT+CIPSTAMAC_DEF – Set MAC address of station, save as default34
- 20. AT+CIPAPMAC – Set MAC address of softAP35
- 21. AT+CIPAPMAC_CUR – Set MAC address of softAP35
- 22. AT+CIPAPMAC_DEF – Set MAC address of softAP and save as default .36
- 23. AT+CIPSTA – Set IP address of station37
- 24. AT+CIPSTA_CUR – Set IP address of station38
- 25. AT+CIPSTA_DEF – Set IP address of station and save as default39
- 26. AT+ CIPAP – Set IP address of softAP40
- 27. AT+CIPAP_CUR – Set IP address of softAP41
- 28. AT+CIPAP_DEF – Set IP address of softAP, save as default42
- 29. AT+CWSTARTSMART – Start SmartConfig43
- 30. AT+CWSTOPSMART – stop SmartConfig43

- 5. TCP/IP Related AT Commands44**
 - 5.1. Overview 44
 - 5.2. TCP/IP 45
 - 1. AT+CIPSTATUS – Information about connection45
 - 2. AT+CIPSTART – Start connection46
 - 3. AT+CIPSEND – Send data47
 - 4. AT+CIPSENDEX – Send data48
 - 5. AT+CIPSENDERBUF – Write data into TCP-send-buffer.....49
 - 6. AT+CIPBUFSTATUS – Check status of TCP-send-buffer50
 - 7. AT+CIPCHECKSEQ – Check if specific segment sent successfully or not51
 - 8. AT+CIPBUFRESET – Reset segment ID count51



- 9. AT+CIPCLOSE – Close TCP or UDP connection.....52
- 10. AT+CIFSR – Get local IP address52
- 11. AT+CIPMUX – Enable multiple connections53
- 12. AT+CIPSERVER – Configure as TCP server54
- 13. AT+CIPMODE – Set transfer mode55
- 14. AT+SAVETRANSLINK – Save transparent transmission link to Flash56
- 15. AT+CIPSTO – Set TCP server timeout57
- 16. AT+PING – Function Ping57
- 17. AT+CIUPDATE – Update through network58
- 18. AT+CIPDINFO – Show remote IP and port with “+IPD”58
- 19. +IPD – Receive network data59

- 6. Appendix.....60**
- 7. Q&A.....61**

1. Preambles

AT commands set is divided into: Basic AT commands, WiFi related AT commands, TCP / IP AT commands.

1.1. User-define AT commands

Please use only letters when naming user-define AT commands, do not name it with other characters or numbers.

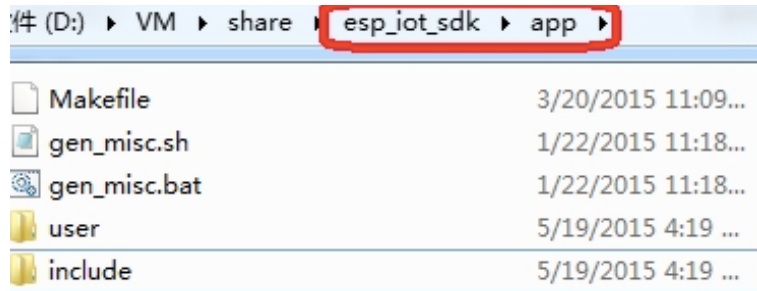
AT is based on esp_iot_sdk, Espressif Systems AT commands are provided in libat.a. In the example of \esp_iot_sdk\examples\at\user\user_main.c, ways are delivered on how to implement a self-defined AT Command, "AT+TEST".

The structure, **at_funcationType**, is used to define four types of a command, e.g. "AT+TEST".

Definition	Type	Description	
at_testCmd	Test	AT Command	AT+TEST=?
		Registered Callback In Example	at_testCmdTest
		Function Design	Return the value range of parameters
		If at_testCmd is registered as NULL, there will be no testing command.	
at_queryCmd	Query	AT Command	AT+TEST?
		Registered Callback In Example	at_queryCmdTest
		Function Design	Return the current value
		If at_queryCmd is registered as NULL, there will be no query command.	
at_setupCmd	Set	AT Command	AT+TEST=parameter1,parameter2,...
		Registered Callback In Example	at_setupCmdTest
		Function Design	Set configuration
		If at_setupCmd is registered as NULL, there will be no setup command.	
at_exeCmd	Execute	AT Command	AT+TEST
		Registered Callback In Example	at_exeCmdTest
		Function Design	Execute an action
		If at_exeCmd is registered as NULL, there will be no execution command.	



Copy all files in folder "at" to folder "app" in `esp_iot_sdk` if users need to compile AT.



1.2. Download AT firmware into Flash

Download:

- `boot.bin`, downloads to flash `0x00000`
- `user1.bin`, downloads to flash `0x01000`
- `blank.bin`, factory initialize,
- AT_v0.22 or version before that, corresponding to 512KB flash size, `blank.bin` downloads to flash both `0x3E000` and `0x7E000`
- AT_v0.23 or version later than that, corresponding to 1024KB flash size, `blank.bin` downloads to flash both `0x7E000` and `0xFE000`

If users compile AT themselves, or need to download `esp_init_data_default.bin`, please refer to documentation "2A-ESP8266_IOT_SDK_User_Manual", `blank.bin` need to download into `user parameter area` and `system parameter area` both in chapter "Flash Map";

Please use Espressif official flash download tool <http://bbs.espressif.com/viewtopic.php?f=5&t=433> select corresponding flash size while downloading.

Notes:

- Please make sure that correct BIN (`/esp_iot_sdk/bin/at`) is already in the chip (ESP8266) before the AT commands listed in this documentation can be used.
- AT has already taken priority 0 and 1 of `system_os_task`, so only one task of priority 2 is allowed to set up by user.
- AT returns messages below to show status of Wi-Fi connection of ESP8266 station
 - ▶ WIFI CONNECTED - Wi-Fi connected
 - ▶ WIFI GOT IP - ESP8266 station got IP from AP
 - ▶ WIFI DISCONNECT - Wi-Fi disconnected

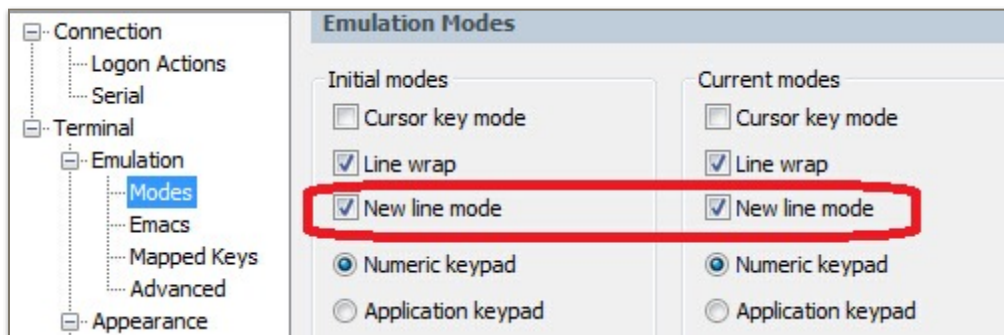
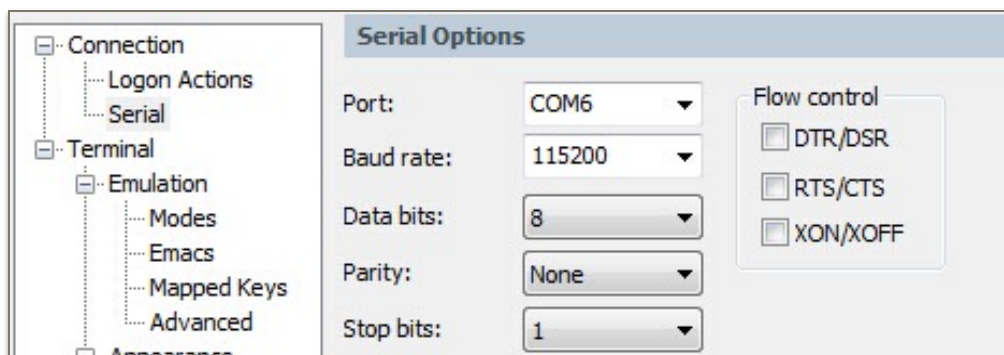
2. Command Description

Each Command set contains four types of AT commands.

Type	Command Format	Description
Test	AT+<x>=?	Query the Set command or internal parameters and its range values.
Query	AT+<x>?	Returns the current value of the parameter.
Set	AT+<x>=<...>	Set the value of user-defined parameters in commands and run.
Execute	AT+<x>	Runs commands with no user-defined parameters.

Notes:

1. Not all AT Command has four commands.
2. [] = default value, not required or may not appear
3. String values require double quotation marks, for example:
[AT+CWSAP="ESP756290", "21030826", 1, 4](#)
4. **Baudrate = 115200**
5. AT Commands has to be capitalized, and end with `"/r/n"`



3. Basic AT Command Set

3.1. Overview

The ESP8266 wireless WiFi modules can be driven via the serial interface using the standard AT commands. Here is a list of some basic AT commands that can be used.

Basic	
Command	Description
AT	Test AT startup
AT+RST	Restart module
AT+GMR	View version info
AT+GSLP	Enter deep-sleep mode
ATE	AT commands echo or not
AT+RESTORE	Factory Reset
AT+UART	UART configuration, [@deprecated]
AT+UART_CUR	UART current configuration
AT+UART_DEF	UART default configuration, save to flash
AT+SLEEP	Sleep mode
AT+RFPOWER	Set maximum value of RF TX Power
AT+RFVDD	Set RF TX Power according to VDD33



3.2. Commands

1. AT – Test AT startup

The type of this command is "executed". It's used to test the setup function of your wireless WiFi module.

AT - Test AT startup	
Response	OK
Parameters	null

2. AT+RST – Restart module

The type of this command is "executed". It's used to restart the module.

AT+RST - Restart module	
Response	OK
Parameters	null

3. AT+GMR – View version info

This AT command is used to check the version of AT commands and SDK that you are using, the type of which is "executed".

AT+GMR - View version info	
Response	<AT version info> <SDK version info> <compile time> OK
Parameters	<AT version info> information about AT version <SDK version info> information about SDK version <compile time> time of the bin was compiled

4. AT+GSLP – Enter deep-sleep mode

This command is used to invoke the deep-sleep mode of the module, the type of which is "set". A minor adjustment has to be made before the module enter this deep sleep mode, i.e., connect XPD_DCDC with EXT_RSTB via OR.

AT+GSLP=<time>	
Response	<time> OK
Parameters	The time unit of <time> is ms. ESP8266 will wake up after deep sleep <time> ms.

5. ATE – AT commands echo

This command ATE is an AT trigger command echo. It means that entered commands can be echoed back to the sender when ATE command is used. Two parameters are possible. The command returns "OK" in normal cases and "ERROR" when a parameter other than 0 or 1 was specified.

ATE - AT commands echo	
Response	OK
Parameters	ATE0: Switch echo off ATE1: Switch echo on

6. AT+RESTORE – Factory reset

This command is used to reset all parameters saved in flash (according to appendix), restore the factory default settings of the module. The chip will be restarted when this command is executed.

AT+RESTORE - Factory reset	
Response	OK
Notes	Restore factory default settings. The chip will restart.



7. AT+UART – UART configuration

This command sets the UART configuration and writes the new configuration to the flash. It is stored as the default parameter and will also be used as the default baudrate henceforth. [THIS API IS DEPRECATED.]

AT+UART=<baudrate>,<databits>,<stopbits>,<parity>,<flow control>	
This command is deprecated, please use AT+UART_CUR or AT+UART_DEF instead.	
Example	AT+UART=115200,8,1,0,3
Response	OK
Parameters	<baudrate> Baudrate range: 110 to 115200*40 (4.608 Mega)
	<databits> 5: 5 bits data 6: 6 bits data 7: 7 bits data 8: 8 bits data
	<stopbits> 1: 1 bit stop bit 2: 1.5 bit stop bit 3: 2 bit stop bit
	<parity> 0: None 1: Odd 2: EVEN
	<flow control> 0: disable flow control 1: enable RTS 2: enable CTS 3: enable both RTS and CTS
Notes	<ul style="list-style-type: none"> This configuration will also store the baudrate as the default rate in the user parameter area in the Flash for boot up. Flow control needs hardware support: MTCK is UART0 CTS and MTDO is UART0 RTS.



8. AT+UART_CUR – current UART configuration

This command sets the current UART configuration; it does not write to the flash. Hence there is no change in the default baudrate.

AT+UART_CUR=<baudrate>,<databits>,<stopbits>,<parity>,<flow control>		
Example	AT+UART_CUR=115200,8,1,0,3	
Response	OK	
Parameters	<baudrate>	Baudrate range: 110 to 115200*40 (4.608 Mega)
	<databits>	5: 5 bits data 6: 6 bits data 7: 7 bits data 8: 8 bits data
	<stopbits>	1: 1 bit stop bit 2: 1.5 bit stop bit 3: 2 bit stop bit
	<parity>	0: None 1: Odd 2: EVEN
	<flow control>	0: disable flow control 1: enable RTS 2: enable CTS 3: enable both RTS and CTS
Notes	<ul style="list-style-type: none"> This configuration will NOT store in the Flash. Flow control needs hardware support: MTCK is UART0 CTS and MTDO is UART0 RTS. 	



9. AT+UART_DEF – default UART configuration

This command sets the UART configuration and save it to flash. It is stored as the default parameter and will also be used as the default baudrate henceforth.

AT+UART_DEF=<baudrate>,<databits>,<stopbits>,<parity>,<flow control>		
Example	AT+UART_DEF=115200,8,1,0,3	
Response	OK	
Parameters	<baudrate>	Baudrate range: 110 to 115200*40 (4.608 Mega)
	<databits>	5: 5 bits data 6: 6 bits data 7: 7 bits data 8: 8 bits data
	<stopbits>	1: 1 bit stop bit 2: 1.5 bit stop bit 3: 2 bit stop bit
	<parity>	0: None 1: Odd 2: EVEN
	<flow control>	0: disable flow control 1: enable RTS 2: enable CTS 3: enable both RTS and CTS
Notes	<ul style="list-style-type: none"> This configuration will be stored in user parameter area in the Flash for boot up. Flow control needs hardware support: MTCK is UART0 CTS and MTDO is UART0 RTS. 	



10. AT+SLEEP – sleep mode

This command sets ESP8266 sleep mode. It can only be used in station mode, default to be modem-sleep mode .

AT+SLEEP - sleep mode	
Command	AT+SLEEP?
Response	+SLEEP : <sleep mode> OK
Parameters	<sleep mode> 0 : disable sleep mode 1 : light-sleep mode 2 : modem-sleep mode
Command	AT+SLEEP=<sleep mode>
Response	OK
Parameters	The same as above.

11. AT+RFPOWER – set maximum value of RF TX Power

This command sets the maximum value of ESP8266 RF TX power, it is not precise.

AT+RFPOWER - set RF TX Power	
Example	AT+RFPOWER=50
Command	AT+RFPOWER=<TX power>
Response	OK
Parameters	<TX power> maximum value of RF TX power, range 0 ~ 82, unit:0.25dBm



12. AT+RFVDD – set RF TX Power according to VDD33

This command sets ESP8266 RF TX power according to VDD33. To get the power voltage of ESP8266 VDD3P3, TOUT pin has to be suspended. TOUT pin has to be suspended to measure VDD33.

AT+RFVDD - set RF TX power according to VDD33	
Command	AT+RFVDD?
Response	+RFVDD:<VDD33> OK
Parameters	<VDD33> power voltage of ESP8266 VDD33, unit: 1/1024 V TOUT pin has to be suspended to measure VDD33.
Command	AT+RFVDD=<VDD33>
Response	OK
Parameters	<VDD33> power voltage of ESP8266 VDD33, range [1900, 3300]
Command	AT+RFVDD
Response	OK
Note	"AT+RFVDD" will automatically set RF TX power according to VDD33. TOUT pin has to be suspended.



4. WiFi Functions Overview

Wi-Fi Connectivity Functions Invoked by AT commands	
Command	Description
AT+CWMODE	Wi-Fi mode (sta/AP/sta+AP) , [@deprecated]
AT+CWMODE_CUR	Wi-Fi mode (sta/AP/sta+AP) Won't save to Flash
AT+CWMODE_DEF	Wi-Fi default mode (sta/AP/sta+AP) Save to Flash
AT+CWJAP	Connect to AP, [@deprecated]
AT+CWJAP_CUR	Connect to AP, won't save to Flash
AT+CWJAP_DEF	Connect to AP, save to Flash
AT+CWLAP	Lists available APs
AT+CWQAP	Disconnect from AP
AT+CWSAP	Set configuration of ESP8266 soft-AP [@deprecated]
AT+CWSAP_CUR	Set configuration of ESP8266 soft-AP Won't save to Flash.
AT+CWSAP_DEF	Set configuration of ESP8266 soft-AP Save to Flash.
AT+CWLIF	Get station's IP which is connected to ESP8266 soft-AP
AT+CWDHCP	Enable/Disable DHCP, [@deprecated]
AT+CWDHCP_CUR	Enable/Disable DHCP, won't save to Flash
AT+CWDHCP_DEF	Enable/Disable DHCP, save to Flash
AT+CWAUTOCONN	Connect to AP automatically when power on
AT+CIPSTAMAC	Set MAC address of ESP8266 station [@deprecated]
AT+CIPSTAMAC_CUR	Set MAC address of ESP8266 station Won't save to Flash.



AT+CIPSTAMAC_DEF	Set MAC address of ESP8266 station Save to Flash.
AT+CIPAPMAC	Set MAC address of ESP8266 soft-AP [@deprecated]
AT+CIPAPMAC_CUR	Set MAC address of ESP8266 soft-AP Won't save to Flash.
AT+CIPAPMAC_DEF	Set MAC address of ESP8266 soft-AP Save to Flash.
AT+CIPSTA	Set IP address of ESP8266 station, [@deprecated]
AT+CIPSTA_CUR	Set IP address of ESP8266 station Won't save to Flash.
AT+CIPSTA_DEF	Set IP address of ESP8266 station Save to Flash.
AT+CIPAP	Set IP address of ESP8266 soft-AP, [@deprecated]
AT+CIPAP_CUR	Set IP address of ESP8266 soft-AP Won't save to Flash.
AT+CIPAP_DEF	Set IP address of ESP8266 soft-AP Save to Flash.



4.1. Commands

1. AT+CWMODE – WiFi mode

The function of this AT command is to get the value scope of WiFi mode, including station mode, softAP mode, and station+softAP mode, enquiry about the information of WiFi mode, or set the WiFi mode.

AT+CWMODE - WiFi mode	
This command is deprecated. Please use AT+CWMODE_CUR or AT+CWMODE_DEF instead.	
Command	AT+CWMODE=?
Response	+CWMODE:(value scope of <mode>) OK
Parameters	Please refer to AT command settings.
Command	AT+CWMODE?
Response	+CWMODE:<mode> OK
Parameters	Please refer to AT command settings.
Command	AT+CWMODE=<mode>
Response	OK
Parameters	<mode> 1 : station mode 2 : softAP mode 3 : softAP + station mode
Notes	This setting will be stored in the flash system parameter area. It won't be erased even when the power is off and restarted.



2. AT+CWMODE_CUR – current WiFi mode

There are three WiFi working modes: Station mode, softAP mode, and the co-existence of Station mode and softAP mode. This command is used to acquire the existing WiFi mode, or to set a customised WiFi mode.

AT+CWMODE_CUR - Set WiFi mode (sta/AP/sta+AP) , won't save to Flash	
Example	AT+CWMODE_CUR=3
Command	AT+CWMODE_CUR=?
Response	+CWMODE_CUR:(value scope of <mode>) OK
Parameters	<mode> 1 : station mode 2 : softAP mode 3 : softAP + station mode
Command	AT+CWMODE_CUR?
Response	+CWMODE_CUR:<mode> OK
Parameters	<mode> 1 : station mode 2 : softAP mode 3 : softAP + station mode
Command	AT+CWMODE_CUR=<mode>
Response	OK
Parameters	<mode> 1 : station mode 2 : softAP mode 3 : softAP + station mode
Notes	This configuration will NOT store in Flash.



3. AT+CWMODE_DEF – default WiFi mode

AT+CWMODE_DEF - WiFi mode (sta/AP/sta+AP), save to Flash	
Example	AT+CWMODE_DEF=3
Command	AT+CWMODE_DEF=?
Response	+CWMODE_DEF:(value scope of <mode>) OK
Parameters	<mode> 1 : station mode 2 : softAP mode 3 : softAP + station mode
Command	AT+CWMODE_DEF?
Response	+CWMODE_DEF:<mode> OK
Parameters	<mode> 1 : station mode 2 : softAP mode 3 : softAP + station mode
Command	AT+CWMODE_DEF=<mode>
Response	OK
Parameters	<mode> 1 : station mode 2 : softAP mode 3 : softAP + station mode
Notes	This configuration will store in Flash system parameter area.



4. AT+CWJAP – Connect to AP

AT+CWJAP - Connect to AP	
[@deprecated]. Please use AT+CWJAP_CUR or AT+CWJAP_DEF instead.	
Example	<ul style="list-style-type: none"> • AT+CWJAP = "abc", "0123456789" • If SSID is "ab/,c" and password is "0123456789"/" AT+CWJAP = "ab///,c", "0123456789"/"//" • If several APs have the same SSID as "abc", target AP can be found by bssid: AT+CWJAP = "abc","0123456789","ca:d7:19:d8:a6:44"
Command	AT+CWJAP?
Response	+CWJAP:<ssid>,<bssid>,<channel>,<rssi> OK
Parameters	<ssid> string, AP's SSID
Command	AT+CWJAP=<ssid>,<pwd>[,<bssid>]
Response	OK or +CWJAP:<error code> FAIL
Parameters	<ssid> string, AP's SSID <pwd> string, MAX: 64 bytes ASCII [<bssid>] string, AP's MAC address, for several APs may have the same SSID <error code> only for reference, it's not reliable <error code> 1 connecting timeout <error code> 2 wrong password <error code> 3 can not found target AP <error code> 4 connect fail This command needs station mode enable. Escape character syntax is needed if "SSID" or "password" contains any special characters ('', \, "" and '/')
Notes	This configuration will store in Flash system parameter area.



5. AT+CWJAP_CUR – Connect to AP, for current

AT+CWJAP_CUR - Connect to AP, won't save to Flash	
Example	<ul style="list-style-type: none"> AT+CWJAP_CUR ="abc","0123456789" If SSID is "ab/,c" and password is "0123456789"/" AT+CWJAP_CUR="ab///,c","0123456789"/"//" If several APs have the same SSID as "abc",target AP can be found by bssid: AT+CWJAP_CUR="abc","0123456789","ca:d7:19:d8:a6:44"
Command	AT+CWJAP_CUR?
Response	+CWJAP_CUR:<ssid>,<bssid>,<channel>,<rssi> OK
Parameters	<ssid> string, AP's SSID
Command	AT+CWJAP_CUR=<ssid>,<pwd>[,<bssid>]
Response	OK or +CWJAP:<error code> FAIL
Parameters	<p><ssid> string, AP's SSID <pwd> string, MAX: 64 bytes ASCII [<bssid>] string, AP's MAC address, for several APs may have the same SSID <error code> only for reference,it's not reliable <error code> 1 connecting timeout <error code> 2 wrong password <error code> 3 can not found target AP <error code> 4 connect fail</p> <p>This command needs station mode enable. Escape character syntax is needed if "SSID" or "password" contains any special characters(',\ ' and '/')</p>
Notes	This configuration will NOT store in Flash .



6. AT+CWJAP_DEF – Connect to AP, save as default

AT+CWJAP_DEF - Connect to AP and save AP info to flash	
Example	<ul style="list-style-type: none"> AT+CWJAP_DEF="abc","0123456789" If SSID is "ab/,c" and password is "0123456789"/" AT+CWJAP_DEF="ab//,c","0123456789//" If several APs have the same SSID as "abc",target AP can be found by bssid: AT+CWJAP_DEF="abc","0123456789","ca:d7:19:d8:a6:44"
Command	AT+CWJAP_DEF?
Response	+CWJAP_DEF:<ssid>,<bssid>,<channel>,<rssi> OK
Parameters	<ssid> string, AP's SSID
Command	AT+CWJAP_DEF=<ssid>,<pwd>[,<bssid>]
Response	OK or +CWJAP:<error code> FAIL
Parameters	<ssid> string, AP's SSID <pwd> string, MAX: 64 bytes ASCII [<bssid>] string, AP's bssid(MAC address), for several APs may have the same SSID <error code> only for reference,it's not reliable <error code> 1 connecting timeout <error code> 2 wrong password <error code> 3 can not found target AP <error code> 4 connect fail This command needs station mode enable. Escape character syntax is needed if "SSID" or "password" contains any special characters ('、' and '/')
Notes	This configuration will store in Flash system parameter area.



7. AT+CWLAP – List available APs

AT+CWLAP - Lists available APs	
Example	<ul style="list-style-type: none"> • AT+CWLAP List of all available AP's detected by ESP8266 • AT+CWLAP="wifi","ca:d7:19:d8:a6:44",6 Find AP with specific SSID and MAC at specific channel. • AT+CWLAP="wifi" Find AP with specific SSID
Command	AT+CWLAP=<ssid>,<mac>,<ch>
Response	+CWLAP:<ecn>,<ssid>,<rssi>,<mac>,<ch>,<freq offset> OK ERROR
Parameters	<p><ecn></p> <ul style="list-style-type: none"> 0 OPEN 1 WEP 2 WPA_PSK 3 WPA2_PSK 4 WPA_WPA2_PSK <p><ssid> string, SSID of AP <rssi> signal strength <mac> string, MAC address <freq offset> frequency offset of AP, unit: KHz. <freq offset> / 2.4 to get unit "ppm"</p>
Command	AT+CWLAP
Response	+CWLAP:<ecn>,<ssid>,<rssi>,<mac>,<ch>,<freq offset> OK ERROR
Parameters	The same as above



8. AT+CWQAP – Disconnect from AP

AT+CWQAP - Disconnect from AP	
Command	AT+ CWQAP
Response	OK
Parameters	null



9. AT+CWSAP – Configuration of softAP mode

AT+ CWSAP - Configuration of softAP mode	
[@deprecated]. Please use AT+CWSAP_CUR or AT+CWSAP_DEF instead.	
Example	AT+CWSAP="ESP8266","1234567890",5,3
Command	AT+CWSAP?
Response	+CWSAP:<ssid>,<pwd>,<chl>,<ecn>
Parameters	<p><ssid> string, ESP8266 softAP' SSID</p> <p><pwd> string, range: 8 ~ 64 bytes ASCII</p> <p><chl> channel id</p> <p><ecn></p> <ul style="list-style-type: none"> 0 OPEN 2 WPA_PSK 3 WPA2_PSK 4 WPA_WPA2_PSK <p><max conn></p> <p>maximum count of stations that allowed to connect to ESP8266 soft-AP range: [1, 4]</p>
Command	AT+CWSAP=<ssid>,<pwd>,<chl>,<ecn>,<max conn>
Response	OK ERROR
Parameters	The same as above.
Notes	<p>This CMD is only available when softAP mode enable.</p> <p>ESP8266 softAP don't support WEP.</p> <p>This configuration will store in Flash system parameter area.</p>

**10. AT+CWSAP_CUR – Current config of softAP mode**

AT+CWSAP_CUR - Set configuration of softAP mode, won't save to Flash	
Example	AT+CWSAP_CUR="ESP8266","1234567890",5,3
Command	AT+CWSAP_CUR?
Response	+CWSAP_CUR:<ssid>,<pwd>,<chl>,<ecn>
Parameters	<p><ssid> string, ESP8266 softAP' SSID</p> <p><pwd> string, range: 8 ~ 64 bytes ASCII</p> <p><chl> channel id</p> <p><ecn></p> <ul style="list-style-type: none"> 0 OPEN 2 WPA_PSK 3 WPA2_PSK 4 WPA_WPA2_PSK <p><max conn></p> <p>maximum count of stations that allowed to connect to ESP8266 soft-AP range: [1, 4]</p>
Command	AT+CWSAP_CUR=<ssid>,<pwd>,<chl>,<ecn>,<max conn>
Response	OK ERROR
Parameters	The same as above.
Notes	<p>This command is only available when softAP mode enable.</p> <p>ESP8266 softAP don't support WEP.</p> <p>This configuration will NOT store in Flash.</p>

**11. AT+CWSAP_DEF – Default config of softAP mode**

AT+ CWSAP_DEF - Set configuration of softAP mode, save to Flash	
Example	AT+CWSAP_DEF="ESP8266","1234567890",5,3
Command	AT+CWSAP_DEF?
Response	+CWSAP_DEF:<ssid>,<pwd>,<chl>,<ecn>
Parameters	<p><ssid> string, ESP8266 softAP' SSID</p> <p><pwd> string, range: 8 ~ 64 bytes ASCII</p> <p><chl> channel ID</p> <p><ecn></p> <ul style="list-style-type: none"> 0 OPEN 2 WPA_PSK 3 WPA2_PSK 4 WPA_WPA2_PSK <p><max conn></p> <p>maximum count of stations that allowed to connect to ESP8266 soft-AP range: [1, 4]</p>
Command	AT+CWSAP_DEF=<ssid>,<pwd>,<chl>,<ecn>,<max conn>
Response	OK ERROR
Parameters	The same as above.
Notes	<p>This command is only available when softAP mode enable.</p> <p>ESP8266 softAP don't support WEP.</p> <p>This configuration will store in Flash system parameter area.</p>

12. AT+CWLIF – IP of stations

This command is used to get the IP of stations that are connected to ESP8266 softAP.

AT+ CWLIF- IP of stations which are connected to ESP8266 softAP	
Response	<IP addr>,<mac> OK
Parameters	<p><IP addr> IP address of stations which are connected to ESP8266 softAP</p> <p><mac> mac address of stations which are connected to ESP8266 softAP</p>
Notes	This command can not get static IP, it is only available if DHCP is enabled.



13. AT+CWDHCP – Enable/Disable DHCP

AT+ CWDHCP - Enable/Disable DHCP	
[@deprecated]. Please use AT+CWDHCP_CUR or AT+CWDHCP_DEF instead.	
Command	AT+CWDHCP?
Response	DHCP disabled or enabled now?
Parameters	Bit0 : 0 - soft-AP DHCP disable 1 - soft-AP DHCP enable bit1 : 0 - station DHCP disable 1 - station DHCP enable
Command	AT+CWDHCP=<mode>,<en>
Response	OK
Parameters	<mode> 0 : set ESP8266 soft-AP 1 : set ESP8266 station 2 : set both softAP and station <en> 0 : Disable DHCP 1 : Enable DHCP
Notes	<ul style="list-style-type: none"> • This configuration will store in Flash user parameter area. • This configuration interact with static IP related AT commands (AT+CIPSTA related and AT+CIPAP related): <ul style="list-style-type: none"> ▶ If enable DHCP, static IP will be disabled; ▶ If enable static IP, DHCP will be disabled; ▶ This will depends on the last configuration.



14. AT+CWDHCP_CUR – Enable/Disable DHCP

AT+ CWDHCP_CUR - Enable/Disable DHCP, won't save to flash	
Command	AT+CWDHCP_CUR?
Response	DHCP disabled or enabled now?
Parameters	Bit0 : 0 - soft-AP DHCP disable 1 - soft-AP DHCP enable bit1 : 0 - station DHCP disable 1 - station DHCP enable
Command	AT+CWDHCP_CUR=<mode>,<en>
Response	OK
Parameters	<mode> 0 : set ESP8266 soft-AP 1 : set ESP8266 station 2 : set both softAP and station <en> 0 : Disable DHCP 1 : Enable DHCP
Notes	<ul style="list-style-type: none"> • This configuration will NOT store in Flash user parameter area. • This configuration interact with static IP related AT commands (AT+CIPSTA related and AT+CIPAP related): <ul style="list-style-type: none"> ▶ If enable DHCP, static IP will be disabled; ▶ If enable static IP, DHCP will be disabled; ▶ This will depends on the last configuration.



15. AT+CWDHCP_DEF – Enable/Disable DHCP and save to Flash

AT+ CWDHCP_DEF - Enable/Disable DHCP and save to flash	
Command	AT+CWDHCP_DEF?
Response	DHCP disabled or enabled now?
Parameters	Bit0 : 0 - soft-AP DHCP disable 1 - soft-AP DHCP enable bit1 : 0 - station DHCP disable 1 - station DHCP enable
Command	AT+CWDHCP_DEF=<mode>,<en>
Response	OK
Parameters	<mode> 0 : set ESP8266 soft-AP 1 : set ESP8266 station 2 : set both softAP and station <en> 0 : Disable DHCP 1 : Enable DHCP
Notes	<ul style="list-style-type: none"> • This configuration will store in Flash user parameter area. • This configuration interact with static IP related AT commands (AT+CIPSTA related and AT+CIPAP related): <ul style="list-style-type: none"> ▸ If enable DHCP, static IP will be disabled; ▸ If enable static IP, DHCP will be disabled; ▸ This will depends on the last configuration.

**16. AT+CWAUTOCONN – Auto connect to AP or not**

AT+CWAUTOCONN - Connect to AP automatically or not	
Example	AT+CWAUTOCONN=1
Command	AT+CWAUTOCONN=<enable>
Response	OK
Parameters	<enable> 0 : do NOT auto-connect to AP when power on 1 : connect to AP automatically when power on Default is enable, ESP8266 station will connect to AP automatically when power on.
Notes	This configuration will store in Flash system parameter area.

17. AT+CIPSTAMAC – Set MAC address of station

MAC addresses of ESP8266 soft-AP and station are different, please do **NOT** set them to be the same. And the bit 0 of the first byte of ESP8266 MAC address can not be 1, for example, MAC address can be "18:fe:35:98:d3:7b", but can not be "18:fe:35:98:d3:7b".

AT+ CIPSTAMAC - Set MAC address of ESP8266 station [@deprecated]. Use AT+CIPSTAMAC_CUR or AT+CIPSTAMAC_DEF instead.	
Example	AT+CIPSTAMAC="18:fe:35:98:d3:7b"
Command	AT+CIPSTAMAC?
Response	+CIPSTAMAC:<mac> OK
Parameters	<mac> string, MAC address of ESP8266 station
Command	AT+CIPSTAMAC=<mac>
Response	OK
Parameters	<mac> string, MAC address of ESP8266 station
Notes	This configuration will store in Flash user parameter area.

**18. AT+CIPSTAMAC_CUR – Set MAC address of station**

MAC addresses of ESP8266 soft-AP and station are different, please do **NOT** set them to be the same. And the bit 0 of the first byte of ESP8266 MAC address can not be 1, for example, MAC address can be "18:fe:35:98:d3:7b", but can not be "18:fe:35:98:d3:7b".

AT+ CIPSTAMAC_CUR - Set MAC address of ESP8266 station, won't save to Flash	
Example	AT+CIPSTAMAC_CUR="18:fe:35:98:d3:7b"
Command	AT+CIPSTAMAC_CUR?
Response	+CIPSTAMAC_CUR:<mac> OK
Parameters	<mac> string, MAC address of ESP8266 station
Command	AT+CIPSTAMAC_CUR=<mac>
Response	OK
Parameters	<mac> string, MAC address of ESP8266 station
Notes	This configuration will NOT store in Flash.

19. AT+CIPSTAMAC_DEF – Set MAC address of station, save as default

MAC addresses of ESP8266 soft-AP and station are different, please do **NOT** set them to be the same. And the bit 0 of the first byte of ESP8266 MAC address can not be 1, for example, MAC address can be "18:fe:35:98:d3:7b", but can not be "18:fe:35:98:d3:7b".

AT+ CIPSTAMAC_DEF - Set MAC address of ESP8266 station, save to Flash	
Example	AT+CIPSTAMAC_DEF="18:fe:35:98:d3:7b"
Command	AT+CIPSTAMAC_DEF?
Response	+CIPSTAMAC_DEF:<mac> OK
Parameters	<mac> string, MAC address of ESP8266 station
Command	AT+CIPSTAMAC_DEF=<mac>
Response	OK
Parameters	<mac> string, MAC address of ESP8266 station
Notes	This configuration will store in Flash user parameter area.

**20. AT+CIPAPMAC – Set MAC address of softAP**

MAC addresses of ESP8266 soft-AP and station are different, please do **NOT** set them to be the same. And the bit 0 of the first byte of ESP8266 MAC address can not be 1, for example, MAC address can be "1a:fe:36:97:d5:7b", but can not be "15:fe:36:97:d5:7b".

AT+ CIPAPMAC - Set MAC address of ESP8266 softAP [@deprecated]. Use AT+CIPAPMAC_CUR or AT+CIPAPMAC_DEF instead.	
Example	AT+CIPAPMAC="1a:fe:36:97:d5:7b"
Command	AT+CIPAPMAC?
Response	+CIPAPMAC:<mac> OK
Parameters	<mac> string, MAC address of ESP8266 softAP
Command	AT+CIPAPMAC=<mac>
Response	OK
Parameters	<mac> string, MAC address of ESP8266 softAP
Notes	This configuration will store in Flash user parameter area.

21. AT+CIPAPMAC_CUR – Set MAC address of softAP

MAC addresses of ESP8266 soft-AP and station are different, please do **NOT** set them to be the same. And the bit 0 of the first byte of ESP8266 MAC address can not be 1, for example, MAC address can be "1a:fe:36:97:d5:7b", but can not be "15:fe:36:97:d5:7b".

AT+CIPAPMAC_CUR - Set MAC addr of ESP8266 softAP, won't save to Flash	
Example	AT+CIPAPMAC_CUR="1a:fe:36:97:d5:7b"
Command	AT+CIPAPMAC_CUR?
Response	+CIPAPMAC_CUR:<mac> OK
Parameters	<mac> string, MAC address of ESP8266 soft-AP
Command	AT+CIPAPMAC_CUR=<mac>
Response	OK
Parameters	<mac> string, MAC address of ESP8266 soft-AP
Notes	This configuration will not store in Flash.



22. AT+CIPAPMAC_DEF – Set MAC address of softAP and save as default

MAC addresses of ESP8266 soft-AP and station are different, please do **NOT** set them to be the same. And the bit 0 of the first byte of ESP8266 MAC address can not be 1, for example, MAC address can be "1a:fe:36:97:d5:7b", but can not be "15:fe:36:97:d5:7b".

AT+ CIPAPMAC_DEF - Set MAC address of ESP8266 softAP, save to Flash	
Example	AT+CIPAPMAC_DEF="1a:fe:36:97:d5:7b"
Command	AT+CIPAPMAC_DEF?
Response	+CIPAPMAC_DEF:<mac> OK
Parameters	<mac> string, MAC address of ESP8266 soft-AP
Command	AT+CIPAPMAC_DEF=<mac>
Response	OK
Parameters	<mac> string, MAC address of ESP8266 soft-AP
Notes	This configuration will store in Flash user parameter area.



23. AT+CIPSTA – Set IP address of station

Only after ESP8266 station connected to AP, station IP can be got and inquired. This configuration will store in Flash user parameter area.

AT+ CIPSTA - Set IP address of ESP8266 station	
[@deprecated]. Please use AT+CIPSTA_CUR or AT+CIPSTA_DEF instead.	
Example	AT+CIPSTA="192.168.6.100","192.168.6.1","255.255.255.0"
Command	AT+CIPSTA?
Response	+CIPSTA:<IP> OK
Parameters	<IP> string, IP address of ESP8266 station
Command	AT+CIPSTA=<IP>[,<gateway>,<netmask>]
Response	OK
Parameters	<IP> string, IP address of ESP8266 station [<gateway>] gateway [<netmask>] netmask
Notes	This configuration interacts with AT+CWDHCP related AT commands: <ul style="list-style-type: none"> • If enable static IP, DHCP will be disabled; • If enable DHCP, static IP will be disabled; • This will depend on the last configuration.

**24. AT+CIPSTA_CUR – Set IP address of station**

Only after ESP8266 station connected to AP, station IP can be got and inquired. This configuration will **NOT** store in Flash.

AT+CIPSTA_CUR - Set IP address of ESP8266 station, won't save to Flash	
Example	AT+CIPSTA_CUR="192.168.6.100","192.168.6.1","255.255.255.0"
Command	AT+CIPSTA_CUR?
Response	+CIPSTA_CUR:<IP> OK
Parameters	Param description <IP> string, IP address of ESP8266 station
Command	AT+CIPSTA_CUR=<IP>[,<gateway>,<netmask>]
Response	OK
Parameters	<IP> string, IP address of ESP8266 station [<gateway>] gateway [<netmask>] netmask
Notes	This configuration interacts with DHCP related AT commands (AT+CWDHCP related): <ul style="list-style-type: none"> • If enable static IP, DHCP will be disabled; • If enable DHCP, static IP will be disabled; • This will depend on the last configuration.



25. AT+CIPSTA_DEF – Set IP address of station and save as default

AT+CIPSTA_DEF - Set IP address of ESP8266 station, save to Flash	
Example	AT+CIPSTA_DEF="192.168.6.100","192.168.6.1","255.255.255.0"
Command	AT+CIPSTA_DEF?
Response	+CIPSTA:<IP> OK
Parameters	<IP> string, IP address of ESP8266 station
Command	AT+CIPSTA_DEF=<IP>[,<gateway>,<netmask>]
Response	OK
Parameters	<IP> string, IP address of ESP8266 station [<gateway>] gateway [<netmask>] netmask
Notes	<p>This configuration will store in Flash user parameter area.</p> <p>This configuration interacts with DHCP related AT commands (AT+CWDHCP related):</p> <ul style="list-style-type: none"> • If enable static IP, DHCP will be disabled; • If enable DHCP, static IP will be disabled; • This will depend on the last configuration.



26. AT+ CIPAP – Set IP address of softAP

ESP8266 only support class C IP address. This configuration will store in Flash user parameter area.

AT+ CIPAP - Set IP address of ESP8266 softAP	
[@deprecated]. Please use AT+CIPAP_CUR or AT+CIPAP_DEF instead.	
Example	AT+CIPAP="192.168.5.1","192.168.5.1","255.255.255.0"
Command	AT+CIPAP?
Response	+CIPAP:<IP> OK
Parameters	<IP> string, IP address of ESP8266 softAP
Command	AT+CIPAP=<IP>[,<gateway>,<netmask>]
Response	OK
Parameters	<IP> string, IP address of ESP8266 softAP [<gateway>] gateway [<netmask>] netmask
Notes	This configuration interacts with DHCP related AT commands (AT+CWDHCP related): <ul style="list-style-type: none"> • If enable static IP, DHCP will be disabled; • If enable DHCP, static IP will be disabled; • This will depend on the last configuration.

**27. AT+CIPAP_CUR – Set IP address of softAP**

ESP8266 only support class C IP address. This configuration will **NOT** store in Flash.

AT+CIPAP_CUR - Set IP address of ESP8266 softAP, won't save to Flash	
Example	AT+CIPAP_CUR="192.168.5.1","192.168.5.1","255.255.255.0"
Command	AT+CIPAP_CUR?
Response	+CIPAP_CUR:<IP> OK
Parameters	<IP> string, IP address of ESP8266 softAP
Command	AT+CIPAP_CUR=<IP>[,<gateway>,<netmask>]
Response	OK
Parameters	<IP> string, IP address of ESP8266 softAP [<gateway>] gateway [<netmask>] netmask
Notes	This configuration interacts with DHCP related AT commands (AT+CWDHCP related): <ul style="list-style-type: none"> • If enable static IP, DHCP will be disabled; • If enable DHCP, static IP will be disabled; • This will depend on the last configuration.



28. AT+CIPAP_DEF – Set IP address of softAP, save as default

ESP8266 only support class C IP address.

AT+ CIPAP_DEF - Set IP address of ESP8266 softAP, save to Flash	
Example	AT+CIPAP_DEF="192.168.5.1","192.168.5.1","255.255.255.0"
Command	AT+CIPAP_DEF?
Response	+CIPAP_DEF:<IP> OK
Parameters	<IP> string, IP address of ESP8266 softAP
Command	AT+CIPAP_DEF=<IP>[,<gateway>,<netmask>]
Response	OK
Parameters	<IP> string, IP address of ESP8266 softAP [<gateway>] gateway [<netmask>] netmask
Notes	<p>This configuration will store in Flash user parameter area.</p> <p>This configuration interacts with DHCP related AT commands (AT+CWDHCP related):</p> <ul style="list-style-type: none"> • If enable static IP, DHCP will be disabled; • If enable DHCP, static IP will be disabled; • This will depend on the last configuration.



29. AT+CWSTARTSMART – Start SmartConfig

Users can apply for SmartConfig documentation which contains more details about SmartConfig from Espressif Systems. SmartConfig is only available in station mode. Since AT_v1.0 , SmartConfig can get protocol type (AirKiss or ESP-TOUCH) automatically.

AT+CWSTARTSMART - Start SmartConfig	
Example	AT+CWMODE=1 AT+CWSTARTSMART
Command	AT+CWSTARTSMART
Response	OK
Parameters	none
Notes	<ul style="list-style-type: none"> • Message "Smart get wifi info" means Smart Config get AP's information successfully, then ESP8266 try to connect to target AP, print "WIFI CONNECTED" and "WIFI GOT IP" if succeed; • ESP8266 can't do anything during SmartConfig so please wait till it succeed or use command "AT+CWSTOPSMART" to stop SmartConfig.

30. AT+CWSTOPSMART – stop SmartConfig

AT+CWSTOPSMART stop SmartConfig	
Command	AT+CWSTOPSMART
Response	OK
Notes	No matter SmartConfig succeed or not, before any other AT commands please always call "AT+CWSTOPSMART" to release the buffer it took first.



5. TCP/IP Related AT Commands

5.1. Overview

TCP/IP	
Command	Description
AT+ CIPSTATUS	Get connection status
AT+CIPSTART	Establish TCP connection or register UDP port
AT+CIPSEND	Send data
AT+CIPSENDEX	Send data, if <length> or “\0” is met, data will be sent
AT+CIPSENDERBUF	Write data into TCP-send-buffer
AT+CIPBUFRESET	Reset segment ID count
AT+CIPBUFSTATUS	Check status of TCP-send-buffer
AT+CIPCHECKSEQ	Check if a specific segment is sent or not
AT+CIPCLOSE	Close TCP/UDP connection
AT+CIFSR	Get local IP address
AT+CIPMUX	Set multiple connections mode
AT+CIPSERVER	Configure as server
AT+CIPMODE	Set transmission mode
AT+SAVETRANSLINK	Save transparent transmission link to Flash
AT+CIPSTO	Set timeout when ESP8266 runs as TCP server
AT+CIUPDATE	Upgrade firmware through network
AT+PING	Function PING
AT+CIPDINFO	Show remote IP and remote port with “+IPD”



5.2. TCP/IP

1. AT+CIPSTATUS – Information about connection

AT+CIPSTATUS - Information about connection	
Command	AT+CIPSTATUS
Response	STATUS:<stat> +CIPSTATUS:<link ID>,<type>,<remote_IP>,<remote_port>,<local_port>,<tetype>
Parameters	<stat> 2 : Got IP 3 : Connected 4 : Disconnected <link ID> ID of the connection (0~4), for multi-connect <type> string, "TCP" or "UDP" <remote_IP> string, remote IP address. <remote_port> remote port number <local_port> ESP8266 local port number <tetype> 0: ESP8266 runs as client 1: ESP8266 runs as server



2. AT+CIPSTART – Start connection

Please refer to documentation "4B-ESP8266__AT Command Examples" to use this command.

AT+CIPSTART - Establish TCP connection or register UDP port, start connection	
Example	AT+CIPSTART="TCP","192.168.101.110",1000 AT+CIPSTART="TCP"," iot.espressif.cn ",8000
Single connection	(+CIPMUX=0) AT+CIPSTART=<type>,<remote IP>,<remote port>[,<UDP local port>,<UDP mode>][,<TCP keep alive>]
Multiple connection	(+CIPMUX=1) AT+CIPSTART=<link ID>,<type>,<remote IP>,<remote port>,<UDP local port>,<UDP mode>][,<TCP keep alive>]
Response	OK or ERROR If connection already exists, returns ALREAY CONNECT
Parameters	<link ID> ID of the connection (0~4), for multi-connect <type> string, "TCP" or "UDP" <remote IP> string, remote IP <remote port> string, remote port [<UDP local port>] for UDP only [<UDP mode>] In UDP transparent transmission, it has to be 0. [<UDP mode>] 0 : destination peer entity of UDP will not change. [<UDP mode>] 1 : destination peer entity of UDP can change once. [<UDP mode>] 2 : destination peer entity of UDP is allowed to change. Note: [<UDP mode>] can only be used when [<UDP local port>] is set. [<TCP keep alive>] default 0. unit: 500 milliseconds. [<TCP keep alive>] 0 : disable TCP keep-alive [<TCP keep alive>] 1 ~ 7200 : TCP keep-alive interval



3. AT+CIPSEND – Send data

Please refer to documentation "4B-ESP8266__AT Command Examples" for more examples.

AT+CIPSEND - Send data	
Single connection	(+CIPMUX=0) AT+CIPSEND=<length>
Multiple connection	(+CIPMUX=1) AT+CIPSEND=<link ID>,<length>
UDP Transmission	AT+CIPSEND=[<link ID>,<length>[,<remote IP>,<remote port>]
Response	Wrap return ">" after set command. Begins receive of serial data, when data length is met, starts transmission of data. If connection cannot be established or gets disconnected during send, returns ERROR If data is transmitted successfully, returns SEND OK
Parameters	<link ID> ID of the connection (0~4), for multi-connect <length> data length, MAX 2048 bytes [<remote IP>] UDP transmission can set remote IP when send data [<remote port>] UDP transmission can set remote port when send data
Command	AT+CIPSEND
Response	Wrap return ">" after execute command. Enters unvarnished transmission, 20ms interval between each packet, maximum 2048 bytes per packet. When single packet containing "+++" is received, it returns to normal command mode. Please wait at least 1 second before sending next AT command. This command can only be used in transparent transmission mode which require to be single connection mode. For UDP transparent transmission, <UDP mode> has to be 0 in command "AT+CIPSTART"



4. AT+CIPSENDEX – Send data

AT+CIPSENDEX - Send data	
Single connection	(+CIPMUX=0) AT+CIPSENDEX=<length>
Multiple connection	(+CIPMUX=1) AT+CIPSENDEX=<link ID>,<length>
UDP Transmission	AT+CIPSENDEX=[<link ID>,<length>,<remote IP>,<remote port>]
Response	Wrap return ">" after set command. Begins receive of serial data, when data length or "\0" is met, starts transmission of data. So if sending "\0" is needed, please send it as "\\0" If connection cannot be established or gets disconnected during send, returns ERROR If data is transmitted successfully, returns SEND OK
Parameters	<link ID> ID of the connection (0~4), for multi-connect <length> data length, MAX 2048 bytes



5. AT+CIPSENDDBUF – Write data into TCP-send-buffer

AT+CIPSENDDBUF - Write data into TCP-send-buffer	
Single connection	(+CIPMUX=0) AT+CIPSENDDBUF=<length>
Multiple connection	(+CIPMUX=1) AT+CIPSENDDBUF=<link ID>,<length>
Response	<p><current segment ID>,<segment ID of which sent successfully> OK ></p> <p>Wrap return ">" begins receiving of serial data, when data <length> is met, send it; data more than <length> will be discarded, and returns "busy"</p> <p>If connection cannot be established, or it's not a TCP connection, or buffer full, or some other error occurred, returns ERROR</p> <p>If data is transmitted successfully, (1) for single connection, returns <segment ID>,SEND OK (2) for multiple connection, returns <link ID>,<segment ID>,SEND OK</p>
Parameters	<p><link ID> ID of the connection (0~4), for multi-connect <segment ID> uint32, starts from 1, add 1 every time be called; <length> data length, data more than <length> will be discarded, MAX 2048 bytes</p>
Note	This command only write data into TCP-send-buffer, so it can be called continually, needn't wait for "SEND OK"; if a TCP segment is sent successfully, it will return <segment ID>,SEND OK



6. AT+CIPBUFSTATUS – Check status of TCP-send-buffer

AT+CIPBUFSTATUS - Check status of TCP-send-buffer	
Example	<p>Single connection:</p> <p>AT+CIPBUFSTATUS returns 20,15,10,200,7</p> <p>20 : means the latest segment ID is 19, next time we call AT+CIPSENDER, the segment ID returned will be 20;</p> <p>15: means TCP segment of which ID is 15 is the latest segment that sent (may not succeed) ;</p> <p>10: means TCP segment of which ID is 10 sent successfully;</p> <p>200: TCP-send-buffer remain 200 bytes that available;</p> <p>7: available TCP queue number, it's not reliable; when queue number is 0, no more TCP data can be sent.</p>
Single connection	(+CIPMUX=0) AT+CIPBUFSTATUS
Multiple connection	(+CIPMUX=1) AT+CIPBUFSTATUS=<link ID>
Response	<p><next segment ID>, < segment ID of which has sent >, < segment ID of which sent successfully>, <remain buffer size>, <queue number></p> <p>OK</p> <p>If connection is not established, returns ERROR</p>
Parameters	<p><link ID> ID of the connection (0~4), for multi-connect</p> <p><next segment ID> next segment ID will be got by AT+CIPSENDER;</p> <p><segment ID of which has sent> the latest segment that sent (may not succeed) ;</p> <p><segment ID of which sent successfully> the latest segment that sent successfully;</p> <p><remain buffer size> TCP-send-buffer remain buffer size;</p> <p><queue number> available TCP queue number, it's not reliable; when queue number is 0, no more TCP data can be sent.</p>

**7. AT+CIPCHECKSEQ – Check if specific segment sent successfully or not**

AT+CIPCHECKSEQ - Check if specific segment sent successfully or not	
Single connection	(+CIPMUX=0) AT+CIPCHECKSEQ=<segment ID>
Multiple connection	(+CIPMUX=1) AT+CIPCHECKSEQ=<link ID>,<segment ID>
Response	[<link ID>,<segment ID> ,<status> OK If connection is not established, returns ERROR
Parameters	<link ID> ID of the connection (0~4), for multi-connect <segment ID> segment ID got by AT+CIPSENDERBUF; <status> TRUE, sent successfully; FALSE, send fail
Note	Only keep status of the latest 32 segments at most.

8. AT+CIPBUFRESET – Reset segment ID count

AT+CIPBUFRESET - Reset segment ID count	
Single connection	(+CIPMUX=0) AT+CIPBUFRESET
Multiple connection	(+CIPMUX=1) AT+CIPBUFRESET=<link ID>
Response	OK If connection is not established or there are still TCP data wait for sending, returns ERROR
Parameters	<link ID> ID of the connection (0~4), for multi-connect



9. AT+CIPCLOSE – Close TCP or UDP connection

AT+CIPCLOSE - Close TCP or UDP connection	
Multiple connection	AT+CIPCLOSE=<link ID>
Response	OK or ERROR
Parameters	<link ID> ID no. of connection to close, when ID=5, all connections will be closed. (ID=5 has no effect in server mode)
Single connection	AT+CIPCLOSE
Response	OK or If no such connection, returns ERROR

10. AT+CIFSR – Get local IP address

AT+CIFSR - Get local IP address	
Command	AT+ CIFSR
Response	+ CIFSR:<IP address> OK ERROR
Parameters	<IP address> IP address of ESP8266 softAP IP address of ESP8266 station
Note	Only after ESP8266 station connected to AP, station IP can be got and inquired.



11. AT+CIPMUX – Enable multiple connections

AT+ CIPMUX - Enable multiple connections or not	
Example	AT+CIPMUX=1
Command	AT+CIPMUX?
Response	+ CIPMUX:<mode> OK
Parameters	<mode>0 single connection <mode>1 multiple connection
Command	AT+CIPMUX=<mode>
Response	OK If already connected, returns Link is builded
Parameters	The same as above.
Notes	1. "AT+CIPMUX=1" can only be set when transparent transmission disabled ("AT+CIPMODE=0") 2. This mode can only be changed after all connections are disconnected. 3. If TCP server is started, has to delete TCP server first, then change to single connection is allowed.



12. AT+CIPSERVER – Configure as TCP server

Server monitor will automatically be created when Server is created. When a client is connected to the server, it will take up one connection, be gave an id.

AT+CIPSERVER - Configure as TCP server	
Example	AT+CIPMUX=1 AT+CIPSERVER=1,1001
Command	AT+CIPSERVER=<mode>[,<port>]
Response	OK
Parameters	<mode> 0 Delete server <mode> 1 Create server <port> port number, default is 333
Notes	Server can only be created when AT+CIPMUX=1



13. AT+CIPMODE – Set transfer mode

UART-WiFi passthrough mode (transparent transmission) can only be enabled in TCP single connection mode or UDP of which remote IP and port won't change (parameter <UDP mode> is 0 when using command "AT+CIPSTART" to create a UDP transmission).

During UART-WiFi passthrough transmission, if it is TCP connection and the TCP connection breaks, ESP8266 will keep trying to reconnect until "+++" is inputted to quit from transmission. After "+++", please wait at least 1 second before sending next AT command.

If it is a normal TCP transmission and TCP connection breaks, ESP8266 will prompt "[<link ID>] CLOSED", and won't try to reconnect. Users can call "AT+CIPSTART" to create a connection again if it's needed.

AT+ CIPMODE - Set transfer mode	
Example	AT+CIPMODE=1
Command	AT+CIPMODE?
Response	+ CIPMODE:<mode> OK
Parameters	same as below
Command	AT+CIPMODE=<mode>
Response	OK If already connected, returns Link is builded
Parameters	<mode>0 normal mode <mode>1 UART-WiFi passthrough mode
Notes	This configuration would NOT save into Flash.



14. AT+SAVETRANSLINK – Save transparent transmission link to Flash

AT+SAVETRANSLINK - Save transparent transmission link to Flash	
Example	AT+SAVETRANSLINK=1,"192.168.6.110",1002,"TCP"
Command	AT+SAVETRANSLINK =<mode>,<remote IP>,<remote port>[,<type>][,<TCP keep alive>][,<UDP local port>]
Response	OK or ERROR
Parameters	<p><mode></p> <p>0 : normal mode, cancel enter UART-WiFi passthrough mode when power on 1 : save UART-WiFi passthrough mode</p> <p><remote IP> remote IP</p> <p><remote port> remote port</p> <p>[<type>] TCP or UDP, default to be "TCP"</p> <p>[<TCP keep alive>] TCP keep alive, default to be disabled</p> <p>0: disable TCP keep alive 1 ~ 7200: keep-alive detect time interval, unit: 500 ms</p> <p>[<UDP local port>] local port if enter UDP transparent transmission when power on.</p>
Notes	<ul style="list-style-type: none"> • This command will save the UART-WiFi passthrough mode and its link into Flash user parameter area, ESP8266 will enter UART-WiFi passthrough mode since next power on. • As long as the IP, port numerical conformance to specification, we will save them to Flash



15. AT+CIPSTO – Set TCP server timeout

AT+ CIPSTO - Set TCP server timeout	
Example	AT+CIPMUX=1 AT+CIPSERVER=1,1001 AT+CIPSTO=10
Command	AT+CIPSTO?
Response	+ CIPSTO:<time> OK
Parameters	The same as below.
Command	AT+CIPSTO=<time>
Response	OK
Parameters	<time> TCP server timeout, range 0~7200 seconds
Notes	ESP8266 as TCP server, will disconnect to TCP client that didn't communicate with it even if timeout. If AT+CIPSTO=0, it will never timeout. We don't recommend that.

16. AT+PING – Function Ping

AT+PING - Function Ping	
Example	AT+PING="192.168.1.1" AT+PING="www.baidu.com"
Command	AT+PING=<IP>
Response	+<time> OK Or ERROR // means ping fail
Parameters	Param description <IP> : string, host IP or domain name <time> : response time of ping



17. AT+CIUPDATE – Update through network

Firmware upgrade depends on network condition. It will return **ERROR** if upgrade fail, please wait a while.

- If using Espressif AT BIN ([\esp_iot_sdk\bin\at](#)), “AT+CIUPDATE” will download new AT BIN from Espressif Cloud.
- If using user-compiled AT BIN, users need to make their own “AT+CIUPDATE” to upgrade, Espressif provide a demo in [\esp_iot_sdk\example\at](#). AT BINs on server have to be named as “user1.bin” and “user2.bin”

AT+ CIUPDATE - update through network	
Command	AT+CIUPDATE
Response	+CIUPDATE:<n> OK
Parameters	<n> 1 found server <n> 2 connect server <n> 3 got edition <n> 4 start update

18. AT+CIPDINFO – Show remote IP and port with “+IPD”

AT+CIPDINFO - Show remote IP and port with “+IPD” (received data from network)	
Example	AT+CIPDINFO=1
Command	AT+CIPDINFO=<mode>
Response	OK Or ERROR
Parameters	Param description <mode> 0: won't show remote IP and port with “+IPD” <mode> 1: show remote IP and port with “+IPD”



19. +IPD – Receive network data

+IPD - Receive network data	
Single connection	(+CIPMUX=0) +IPD,<len>[,<remote IP>,<remote port>]:<data>
Multiple connection	(+CIPMUX=1) +IPD,<ID>,<len>[,<remote IP>,<remote port>]:<data>
Parameters	<remote IP> remote IP, enabled by command "AT+CIPDINFO=1" <remote port> remote port, enabled by command "AT+CIPDINFO=1" <ID> id no. of connection <len> data length <data> data received
Notes	When the module receives network data, it will send the data through the serial port using +IPD command.



6. Appendix

ESP8266 AT commands below will save configuration parameters into flash:

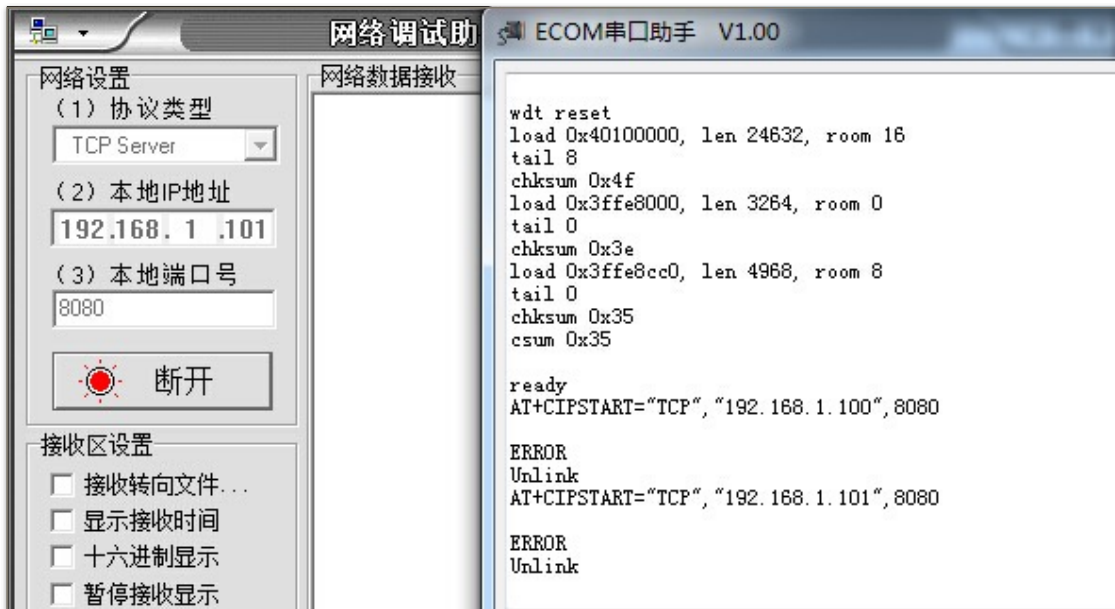
<i>AT Command</i>	<i>Example</i>
Save into flash user parameter area	
AT+UART_DEF	AT+UART_DEF=115200,8,1,0,3
AT+CWDHCP_DEF	AT+CWDHCP_DEF=1,1
AT+CIPSTAMAC_DEF	AT+CIPSTAMAC_DEF="18:fe:35:98:d3:7b"
AT+CIPAPMAC_DEF	AT+CIPAPMAC_DEF="1a:fe:36:97:d5:7b"
AT+CIPSTA_DEF	AT+CIPSTA_DEF="192.168.6.100"
AT+CIPAP_DEF	AT+CIPAP_DEF="192.168.5.1"
AT+SAVETRANSLINK	AT+SAVETRANSLINK =1,"192.168.6.10",1001
Save into flash system parameter area	
AT+CWMODE_DEF	AT+CWMODE_DEF=3
AT+CWJAP_DEF	AT+CWJAP_DEF="abc", "0123456789"
AT+CWSAP_DEF	AT+CWSAP_DEF="ESP8266","12345678",5,3
AT+CWAUTOCONN	AT+CWAUTOCONN=1

- Only if the configuration changes, we will write the new configuration to flash.
- To 512KB flash, default setting:
 - user parameter area is `0x3C000 ~ 0x40000`, 16KB;
 - system parameter area is `0x7C000~0x80000`, 16KB
- To 1024KB flash, default setting:
 - user parameter area is `0x7C000 ~ 0x80000`, 16KB;
 - system parameter area is `0xFC000 ~ 0x100000`, 16KB.
- If users compile AT themselves, please refer to document "2A-ESP8266_IOT_SDK_User_Manual" chapter "flash map"
 - user parameter area is the "User param" area in chapter "flash map";
 - system parameter area is always the last 16KB of flash.

7. Q&A

If you have any questions about AT Commands, please contact us (support-at@espressif.com) with information as follows:

- **Version info of AT** : Using "AT+GMR" to get the version info.
Hardware Module info: example Ai-thinker ESP-01
- **Screenshot or steps of the test steps**, for example:



- **Log:**
ets Jan 8 2013,rst cause: 1, boot mode: (3,3)

load 0x40100000, len 26336, room 16
tail 0
chksum 0xde
load 0x3ffe8000, len 5672, room 8
tail 0
chksum 0x69
load 0x3ffe9630, len 8348, room 8
tail 4
chksum 0xcb
csum 0xcb
SDK version: 0.9.1
addr not ack when tx write cmd
mode : sta(18: fe: 34: 97: d5: 7b) + softAP(1a: fe: 34: 97: d5: 7b)